

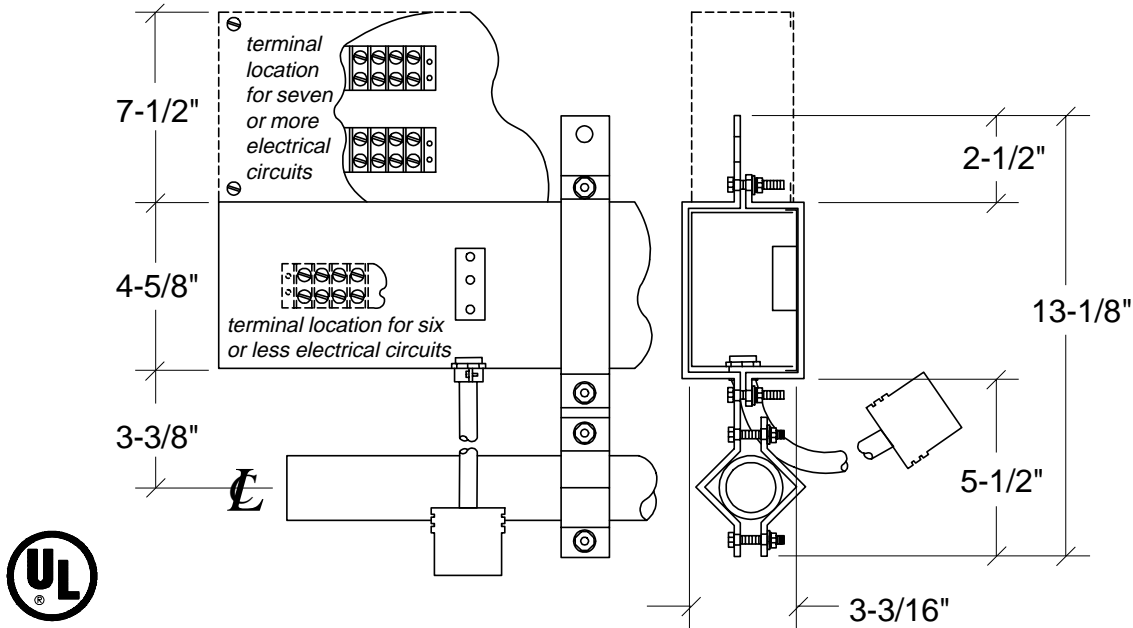


LIGHTING & ELECTRONICS, INC.

Market Street Industrial Park
 Wappingers Falls, NY 12590
 845-297-1244 FAX 845-297-9270
 info@le-us.com http://www.le-us.com

6610

**Connector
 Strip**



DIMENSIONS:

| | WIREWAY | JUNCTION BOX |
|-------------------------------|--------------------|---------------------|
| Height (Top to Bottom) | 4-5/8" | 7-1/2" |
| Depth (Front to Back) | 3-3/16" | 3-3/16" |
| Length (End to End) | per application | per application |
| Weight (steel) | 7 lbs / ft typical | not applicable |
| Weight (aluminum) | 4 lbs / ft typical | not applicable |



SPECIFICATION:

The connector strip shall be a UL/C-UL Listed wireway constructed of 16 gauge welded steel or .125 extruded aluminum. The exterior dimensions of the wireway shall be 4-5/8" high x 3-3/16" deep, with the length being as per job requirements. The strip shall have a terminal compartment containing barrier type terminals. The proper number of terminals shall be provided to allow the installation of separate hot and neutral conductors for each electrical circuit. Terminal blocks shall be double row design, having two screws per terminal, one for the line side conductor and one for the load side conductor. Separate lugs shall be provided for terminating any grounding conductor. The terminal compartment for terminations of six circuits or less shall be within the wireway itself, and a removable 8" access panel shall be provided. The terminal compartment for terminations of seven circuits or more shall be a top mounted code gauge steel junction box, welded construction, and a removable access cover shall be provided.

Receptacles shall be flush mounted to the cover, or attached to 12/3 SO pigtails (drop cords), or both. Pigtails shall be supported by strain reliefs mounted to the bottom surface of the housing. Receptacles shall be spaced and numbered according to the job requirements. Internal wiring shall be rated for 125°C minimum.

When provided with a DMX connector, a separate steel wireway channel shall be provided for all low voltage wiring. A steel back box shall be provided for the DMX connector, and the connector shall have the capability of being replaced without the removal of the connector strip cover. The DMX connector shall be a flush, panel mount type. A separate compartment shall be supplied for the termination of all control wiring .

The connector strip shall be supplied with hanging hardware (Cat# 541S) to accommodate a single 2" max O.D. pipe. One hanger shall be supplied for each 5'-0" of strip length. Hanging hardware (Cat# 541D) to accommodate a pair of 2" max O.D. pipes can be provided as an option. All painted surfaces shall be baked enamel.