



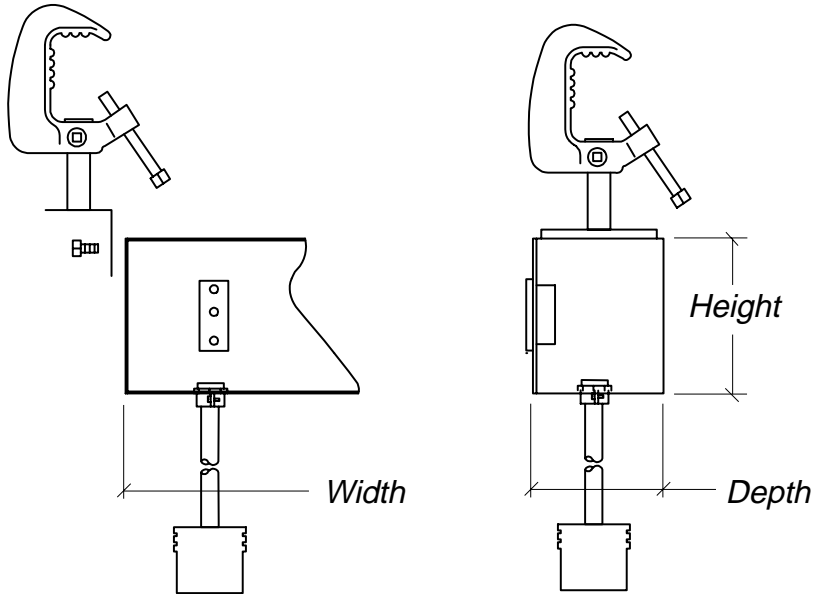
LIGHTING & ELECTRONICS, INC.

Market Street Industrial Park
 Wappingers Falls, NY 12590
 845-297-1244 FAX 845-297-9270
 info@le-us.com http://www.le-us.com

- 6610P-1
- 6610P-2
- 6610P-3
- 6610P-4

Plug Box

Field installed pipe
 mount hanger and
 U bolts (not shown)
 included with Pipe
 Mount Plug Boxes.
 C clamps sold
 separately.



DIMENSIONS:

	Cat# 6610P- * (Surface Mount)	Cat# 6610P- * -P (Pipe Mount)	Cat# 6610P- * -F (Flush Mount)
BOX			
Height (Top to Bottom)	4-5/8"	4-5/8"	4-5/8"
Depth (Front to Back)	3-3/16"	3-3/16"	3-3/16"
Width (Side to Side) Steel	12"	12"	12"
Width (Side to Side) Alum.	Any	Any	Any
COVER			
Height (Top to Bottom)	4-5/8"	4-5/8"	5-15/16"
Width (Side to Side) Steel	12"	12"	13-15/16"
Width (Side to Side) Alum.	Any	Any	Any
Thickness Steel	1/16"	1/16"	1/16"
Thickness Aluminum	1/8"	1/8"	1/8"

SPECIFICATION: * = 1, 2, 3 or 4 (Corresponds to the number of receptacles specified)

The plug box shall be a UL/C-UL Listed wireway constructed of 16 gauge welded steel or .125 extruded aluminum. The exterior dimensions of the wireway shall be 4-5/8" high x 3-3/16" deep x ___" wide.

Receptacles shall be flush mounted to the cover, or attached to 18" 12/3 SO pigtails (drop cords), or both. Pigtails shall be supported by a strain reliefs mounted to the bottom surface of the housing. Receptacles shall be spaced evenly and numbered as per job requirements.

The plug box shall be available in three mounting configurations: surface mount, pipe mount, or flush (recessed) mount. Pipe mount hangers shall be provided with holes for both U bolt and C clamp mounting. Boxes shall be capable of being converted to each mounting type in the field by exchanging accessories at the site using only common hand tools. Flush mount covers shall have a 21/32" flange around the perimeter.

Pipe mount boxes are provided with pipe mount hangers, hanger mounting bolts, and U bolts. Optional C clamps are available separately. All painted surfaces shall be baked enamel.