

# 150W DIMMING LED Worklite-Houselite



**Data Sheet**

## **H12M x W8M x L8M (1 set) / Luminaire CIE classification**

150W-Constant current LED Worklite/Houselite

Article No.:LED 001

Luminaire Luminous Flux:

13833 lm

Luminaire Wattage:

130.1 W

Luminaire classification according to CIE:

100

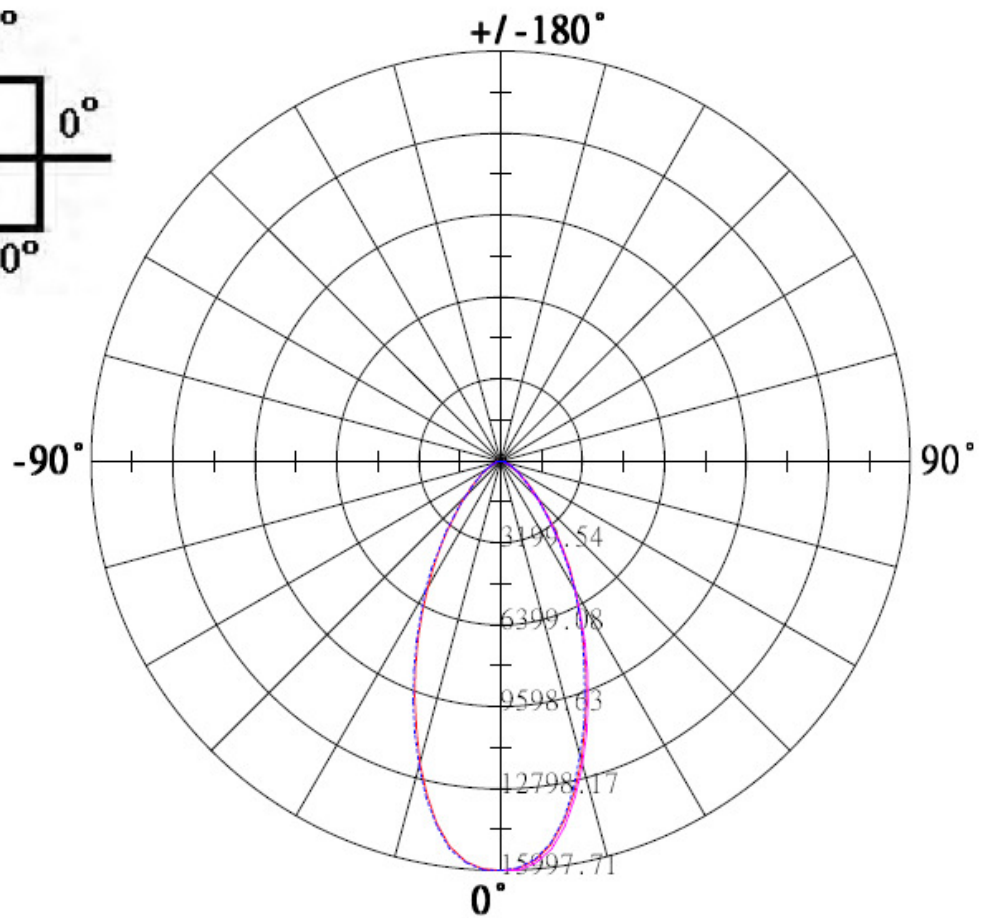
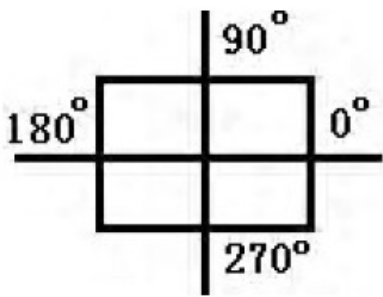
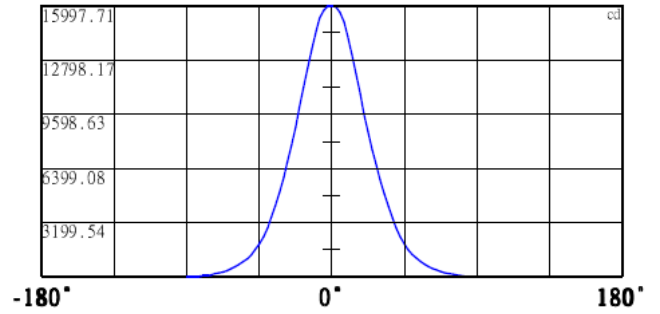
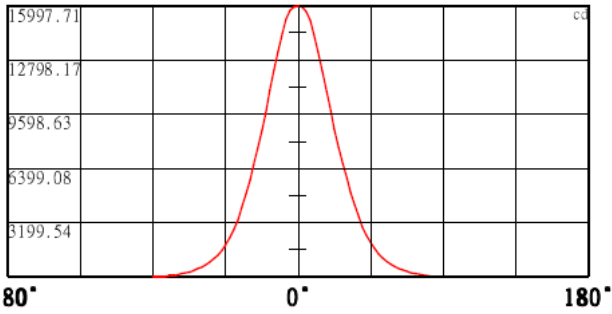
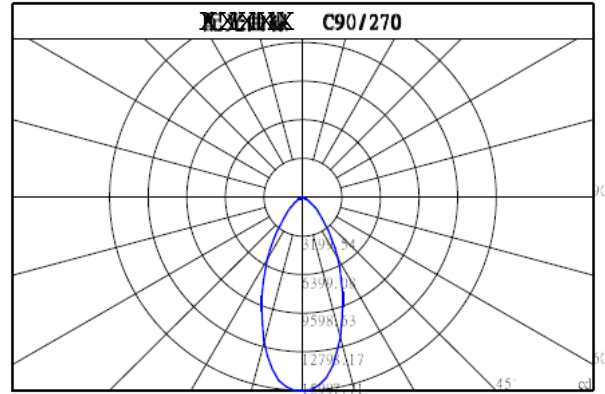
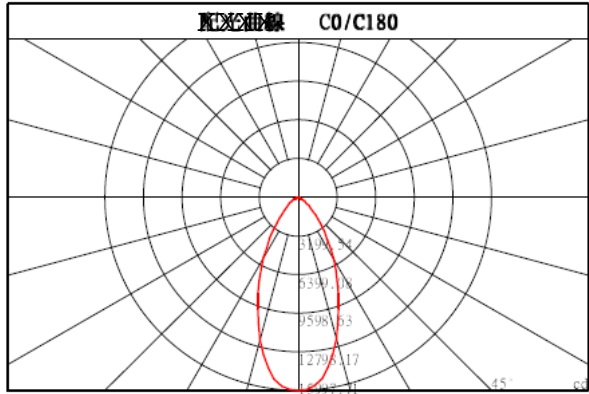
CIE flux code:

82 96 100 100 101

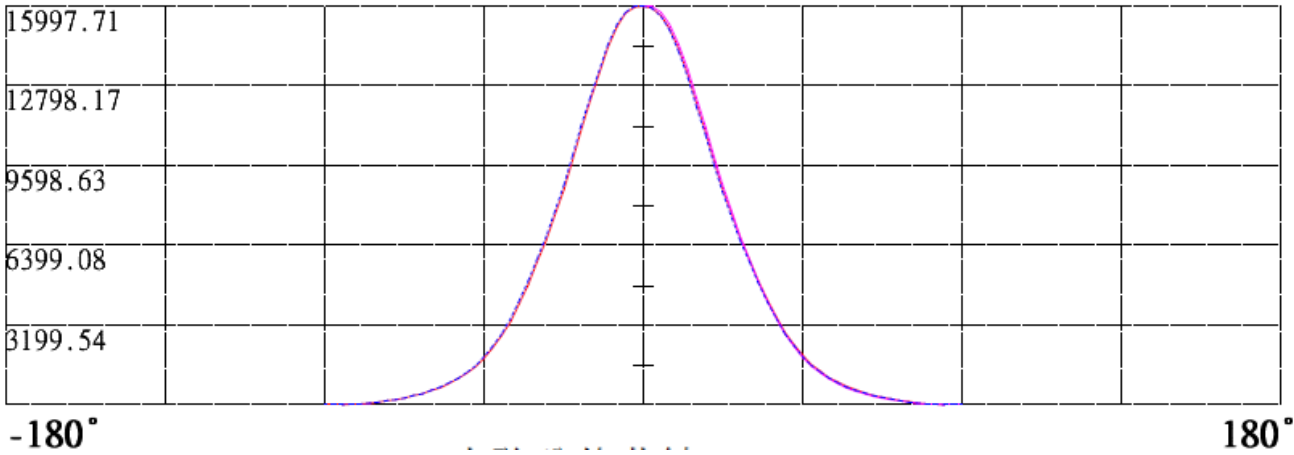
Correction Factor:

1.000

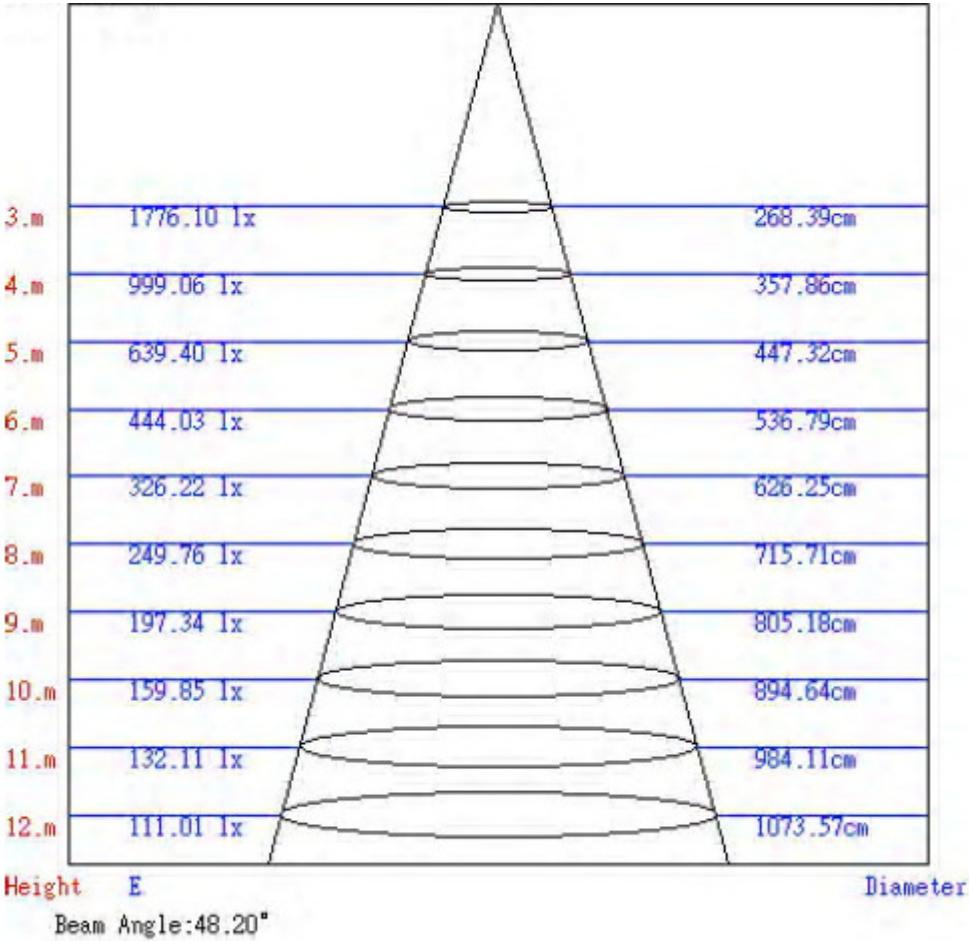
# Luminaire Distribution curve



### Linear Distribution curve



### Photometric chart



## H12M x W8M x L8M (1 set) / Photometric Results

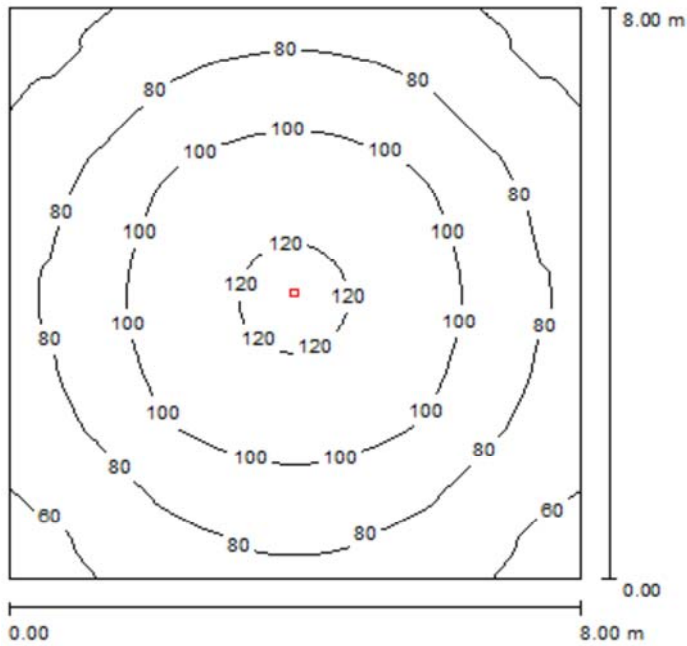
Total Luminous Flux: 13833 lm  
Total Load: 130.1 W  
Light loss factor: 0.80  
Boundary Zone: 0.000 m

| Surface   | Average illuminances [lx] |          |       | Reflection factor [%] | Average luminance [cd/m <sup>2</sup> ] |
|-----------|---------------------------|----------|-------|-----------------------|--|
|           | Direct                    | indirect | total |                       |  |
| Workplane | 70                        | 18       | 87    | /                     | /                                      |
| Floor     | 63                        | 18       | 81    | 20                    | 5.13                                   |
| Ceiling   | 0.00                      | 14       | 14    | 70                    | 3.14                                   |
| Wall 1    | 18                        | 16       | 34    | 50                    | 5.48                                   |
| Wall 2    | 19                        | 16       | 35    | 50                    | 5.51                                   |
| Wall 3    | 18                        | 16       | 34    | 50                    | 5.45                                   |
| Wall 4    | 18                        | 16       | 34    | 50                    | 5.42                                   |

Uniformity on the working plane  
u0: 0.568 (1:2)  
E<sub>min</sub> / E<sub>max</sub>: 0.407 (1:2)

Specific connected load:  $2.03 \text{ W/m}^2 = 2.33 \text{ W/m}^2/100 \text{ lx}$  (Ground area: 64.00 m<sup>2</sup>)

## H12M x W8M x L8M (1 set) / Summary



Height of Room: 12.000 m, Mounting Height: 12.000 m, Light loss factor: 0.80

Values in Lux, Scale 1:103

| Surface   | $\rho$ [%] | $E_{av}$ [lx] | $E_{min}$ [lx] | $E_{max}$ [lx] | $u0$  |
|-----------|------------|---------------|----------------|----------------|-------|
| Workplane | /          | 87            | 50             | 122            | 0.568 |
| Floor     | 20         | 81            | 49             | 108            | 0.609 |
| Ceiling   | 70         | 14            | 10             | 16             | 0.720 |
| Walls (4) | 50         | 34            | 11             | 57             | /     |

### Workplane:

|                |                  |
|----------------|------------------|
| Height:        | 0.850 m          |
| Grid:          | 128 x 128 Points |
| Boundary Zone: | 0.000 m          |

### Luminaire Parts List

| No. | Pieces | Designation (Correction Factor) | $\Phi$ [lm] | P [W] |
|-----|--------|---------------------------------|-------------|-------|
| 1   | 1      | 150W-Constant current (1.000)   | 13833       | 130.1 |

Specific connected load:  $2.03 \text{ W/m}^2 = 2.33 \text{ W/m}^2/100 \text{ lx}$  (Ground area:  $64.00 \text{ m}^2$ )